



SALE HIGH SCHOOL

Welcome!

11/09/2025

Sale High School Values



Value	What this looks like, what it means...
Aspiration	<i>Think big, always have a growth mindset.</i>
Resilience	<i>Work hard, find solutions, never give up.</i>
Achievement	<i>Fulfil your potential, be prepared for what's next.</i>
Respect	<i>Be kind, consider others at all times.</i>
Diversity	<i>Celebrate difference, value everyone.</i>
Community	<i>Make a positive difference, be proud to belong.</i>

Sale High School Values



Value
Aspiration
Resilience
Achievement
Respect
Diversity
Community

When we're aspirational and resilient, we achieve our potential

When we respect others and value diversity we build a strong community where everyone is safe, happy and proud to belong.

An exciting future



United Learning

- We are in the late stages of joining an academy trust – United Learning
- United Learning are the biggest trust in the country and give us access to a range of benefits for staff and students
- The school will still be called Sale High School

DfE Rebuild Project

- We are in the early stages of a rebuild project with the Department for Education
- We don't know the exact scope of the project but it's likely there will be a substantial rebuild of the current building

The School Day



Differences:

- 8.30am start
- One lunch



	Year 7	Year 8	Year 9	Year 10	Year 11
Students Arrive by:	08:30				
Form Time / Assembly	08:35 - 09:00				
Period 1	09:00 - 10:00	09:00 - 10:00	09:00 - 10:00	09:00 - 10:00	09:00 - 10:00
Period 2	10:00 - 11:00	10:00 - 11:00	10:00 - 11:00	10:00 - 11:00	10:00 - 11:00
Break	Break 11:00 - 11:20	Break 11:00 - 11:20	Break 11:00 - 11:20	Break 11:00 - 11:20	Break 11:00 - 11:20
Period 3	11:20 - 12:20	11:20 - 12:20	11:20 - 12:20	11:20 - 12:20	11:20 - 12:20
Period 4	12:20 - 13:20	12:20 - 13:20	12:20 - 13:20	12:20 - 13:20	12:20 - 13:20
Lunch	13:20-14:10	13:20-14:10	13:20-14:10	13:20-14:10	13:20-14:10
Period 5	14:10-15:10	14:10-15:10	14:10-15:10	14:10-15:10	14:10-15:10
Year 11 Period 6 Tuesday, Wednesday, Thursday and Friday only.					15:10 - 15:50

Single lunch from September 2025

- Week A – Years 8 and 10 go first
- Week B – Year 9 and 11 go first
- Second sitting start at 1.40pm and a whistle will be blown on the field to indicate the second sitting
- Year 10 and 11 line up outside Art when it's too wet.



Year	Week A	Week B
7	Students enter through the front door of the hall (near the stage) and form a line to be served. Students need to be out of the hall by 2pm	
8	First sitting: Students line up on the drama corridor at 1.20pm	Second sitting: Students line up on the drama corridor at 1.40pm
9	Second sitting: Students line up on the drama corridor at 1.40pm	First sitting: Students line up on the drama corridor at 1.20pm
10	First sitting: Students line up on the service road 1.20pm	Second sitting: Students line up on the service road at 1.40pm
11	Second sitting: Students line up on the service road at 1.40pm	First sitting: Students line up on the service road 1.20pm

2024-25 Exam Results



Another great set of results for Year 11 at Sale High School!

Attainment 8 was 48.8

Average grade of 4.9, compared to national 4.6

25% of all the grades students achieved were grades 9-7

26% 7+ in maths, 27% 7+ in English

71% of all the grades were 9-4

10% of Triple Science students achieved 3 grade 9s.





The Sale Student – well rounded individuals

- PSHE formally taught lessons - 5 year curriculum being built and implemented using the schools new Values
- Assembly programme based on the school values and the PSHE curriculum
- Student leadership opportunities – Student council, Student Presidents and Vice Presidents
- Extensive extra-curricular programme
- Values Week 2025
- Duke of Edinburgh Award
- Advocacy – supporting charity or good causes
- Diverse curriculum
- Curriculum and cultural trips for all
- Careers Programme fulfilling the GATBY Benchmarks



Supporting Students with SEND



The Learning Hub

- The Learning Hub provides personalised support for students with Special Educational Needs and Disabilities (SEND).
- This dedicated learning environment offers tailored interventions designed to help students overcome barriers to learning and achieve academic success.
- Our experienced team includes Learning Support Assistants who provide in-class support, as well as Intervention Leaders who deliver a variety of interventions, both in small groups and one-to-one sessions, to meet the unique needs of each student.

Mental Health and Wellbeing Support



The Wellbeing Hub

- This is a dedicated space to support the mental, emotional and physical health of students.
- We have a team of **Wellbeing Support Assistants** who work with students on a one-to-one basis over several sessions to help reduce emotional dysregulation, enabling students to engage in learning within the classroom.
- In addition, they can help with anxiety, grief, stress and self-esteem.
- This Hub also offers support on an ad hoc basis and provides a quiet and calm space for students who might feel overwhelmed.



Mental Health and Wellbeing Support



The Talking Hub School Counsellors

- Counselling is a talking therapy and can be accessed through a head of year referral.
- Counsellors can help with low mood, anxiety, grief, stress, bullying, relationships and self-esteem.
- We have two dedicated school counsellors and they offer one-to-one sessions and group sessions to promote wellbeing and positive mental health.



Wellbeing Award for Schools



- The Wellbeing Award for Schools recognises outstanding work in promoting mental health and wellbeing within school communities across England.
- It supports schools in creating a culture where mental health can thrive, and helps them develop strategies for improving student wellbeing.
- We recently achieved the award.





Mrs Laryea

Assistant Headteacher

Pastoral Team



Year 10 form tutors:

Miss Bailey

Mr Jackson

Mr Sutton

Miss Cowell – Barlow

Mr Lee

Miss Stendall / Mr Kelly

Mrs Chung Anderson / Miss Goth

Mrs Whyte / Mrs Horn

Head of Year – Ms Boardman
Senior Head of Year – Mr Worrall
SLT Link – Mrs Laryea

Our Curriculum Intent



At Sale High School we aim to deliver a curriculum that...

- provides our students with a broad range of **essential knowledge** and **key skills**
- is **carefully ordered and sequenced** in a way that enables students to **know more and remember more**
- will help students to **develop characteristics** that equip them for success in school and beyond
- gives them the opportunity to benefit from a wide range of **high quality experiences.**

Homework



- Provides continuous retrieval and practice
- Takes many different forms, including online
- Revision is not always directed
- Students should be completing up to 2.5 hours of homework per day
- Please help by checking on Satchel One*

*this will be moving to Class Charts after the half term holiday

Online independent learning resources



Sparx Maths





Key Dates

- Parents' Evening – **20th November 2025** (in school)
- Mid Year Exams – **From 8th December 2025** (2 week period)
- End of Year Exams – **From 8th June 2026** (2 week period)
- Work experience – **22nd June 2026** (1 week period)
- ATL will be collected every half term

Y10 Work Experience - week beginning Monday 22nd June



We will arrange a student assembly and parent online information evening later this half-term. Here are the basics:

- students will be expected to find a work placement for the week above
- the main requirement for any potential work experience provider is that they have employer liability insurance
- students will be given a form to give to a potential employer to complete
- we are working with a company called MPLOY who will support us with administration and health and safety checks of potential employers
- MPLOY can offer very limited support finding work placements – it is far better for students to find their own placements through friends and family connections, or by approaching businesses



*Personal
Development
Mr Sanderson*



Rewards and positive recognition

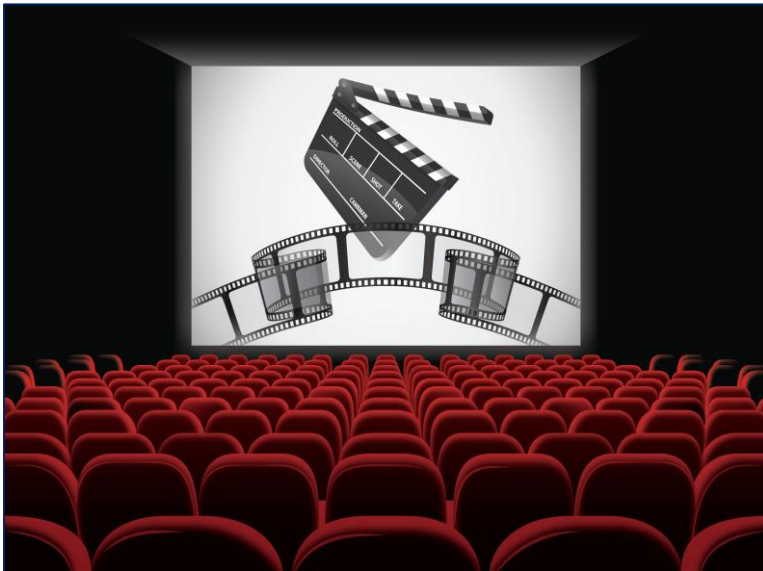
- Rewards trips based on qualifying criteria
- Achievement Awards based on Achievement Points
- Rewards assemblies
- Praise postcards given within departments
- Values awards given out in assembly
- Positive communication home
- Rewards breakfasts to celebrate achievements as a year group community linked to AtL and behaviour points.



Qualifying Rewards 2025-26



Autumn - Cinema Trip



Spring - Bowling Trip



Summer- Blackpool Pleasure Beach



1. No more than 5 behaviour points for the term (*Blackpool is no more than 10 for the whole year*)
2. Excellent attendance
3. Average AtL of 3

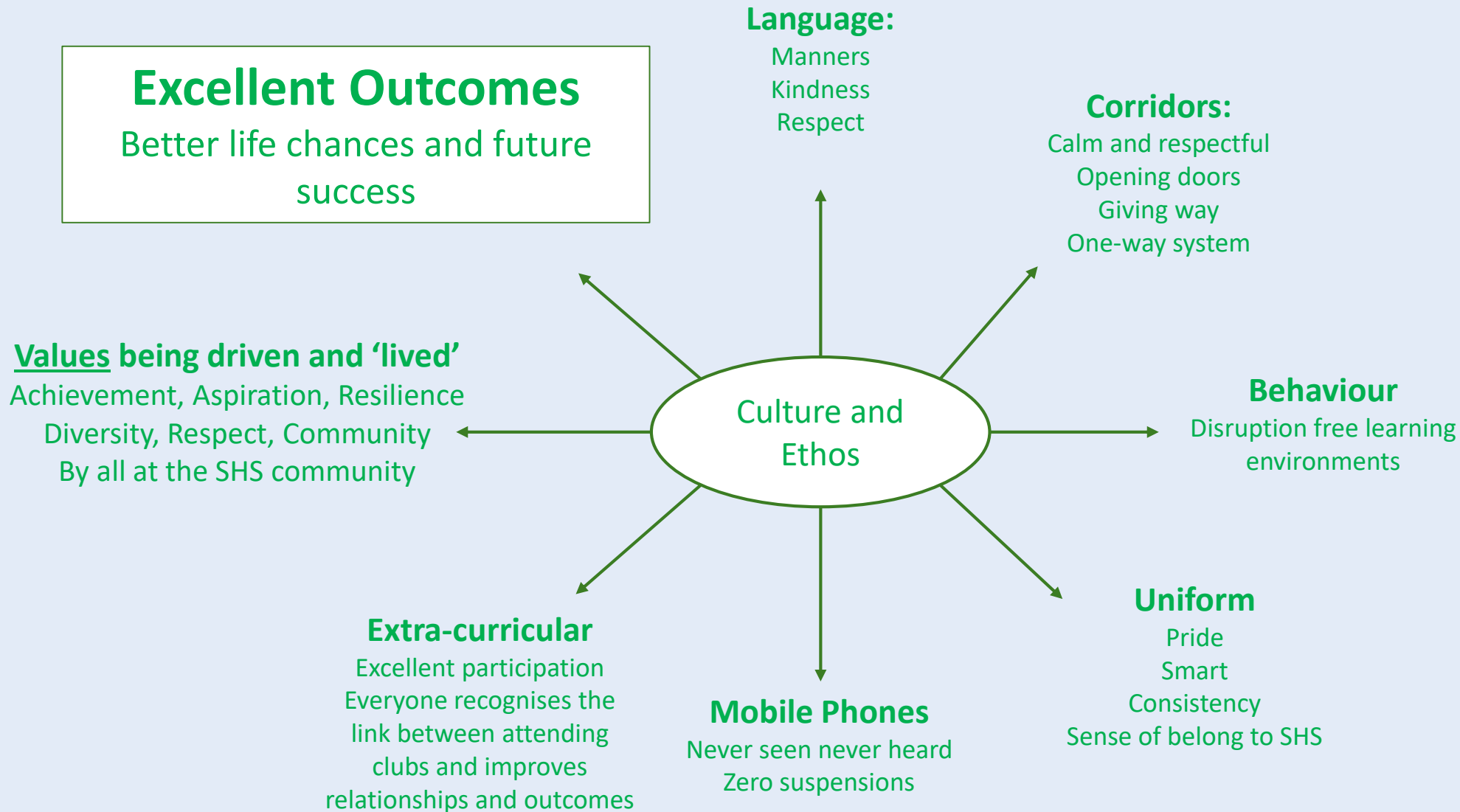
2025/ 2026	Autumn Rewards		Spring Rewards		Summer Rewards	
	1.1	1.2	2.1	2.2	3.1	3.2
Weekly	1. Weekly chocolate bar for Zero Points, most Achievement Points and Weekly email/alert to parents and carers 2. Weekly draw on Friday period 5 for zero negatives on Classcharts					
7	1. Rewards Breakfast for zero behaviour points. 2. Achievement Points leaders meet the headteacher and Headteachers Award. 3. Rewards Assembly 4. SALE Awards assembly	1. Rewards breakfast for zero behaviour points and most improved. 2. Cinema experience. (qualification) 3. Rewards Assembly 4. SALE Awards assembly Qualification criteria: <ul style="list-style-type: none">No more than 5 behaviour points within the termExcellent attendance*AtL score of 3 or aboveZero suspensions & isolation Qualification options: <ul style="list-style-type: none">Cinema trip (cost)Pizza and board games afternoon (free)Afternoon in the Library (free)Afternoon of sports (free)	1. Rewards Breakfast for zero behaviour points. 2. Achievement Points leaders meet the headteacher and Headteachers Award. 3. Rewards Assembly 4. SALE Awards assembly	• Rewards breakfast for zero behaviour points and most improved for spring term. • Achievement Points leaders meet the headteacher and Headteachers Award. • Rewards Assembly. Qualification criteria: <ul style="list-style-type: none">No more than 5 behaviour points within the termExcellent attendance*AtL score of 3 or aboveZero suspensions & isolation Qualification options: <ul style="list-style-type: none">Bowling (cost)Pizza and board games afternoon (free)Afternoon in the Library (free)Afternoon of sports (free)	1. Rewards Breakfast for zero behaviour points. 2. Achievement Points leaders meet the headteacher and Headteachers Award. 3. Rewards Assembly 4. SALE Awards assembly	• Rewards breakfast for zero behaviour points and most improved for spring term. • Achievement Points leaders meet the headteacher and Headteachers Award. • Rewards Assembly. Qualification criteria: <ul style="list-style-type: none">No more than 10 behaviour points for the year.Excellent attendance*AtL score of 3 or aboveZero suspensions & isolation Qualification options: <ul style="list-style-type: none">Blackpool Pleasure Beach (cost)Inflatables (free)Afternoon in the Library (free)Afternoon of sports (free)
8						
9						
10						
11						
Cultural Capital	Charity: McMillan Coffee Morning	Charity: Homelessness at Christmas		Parks and Nature: Yr 7 – Quarry Bank Yr 8 – Dunham Massey Yr 9 - Tatton Park Yr 10 – Lymm Park	Duke of Edinburgh Award	City Cultural Trips Yr 7 – Manchester Yr 8 – Chester Yr 9 - York Yr 10 – Liverpool Advocacy: Values week



A Culture of High Expectations

1. Outstanding attendance (95% and above) – So you learn more and get better outcomes
2. Uniform – Absolute consistency of every student looking smart and professional
3. Personal Development – Taking part in the new and improved Sale Award
4. Behaviour – Disruption free lessons
5. Learning Expectations – fulfilling them every lesson

Positive Culture and Ethos



Success at school equation



Very simply:

Success = Turn up + Work hard

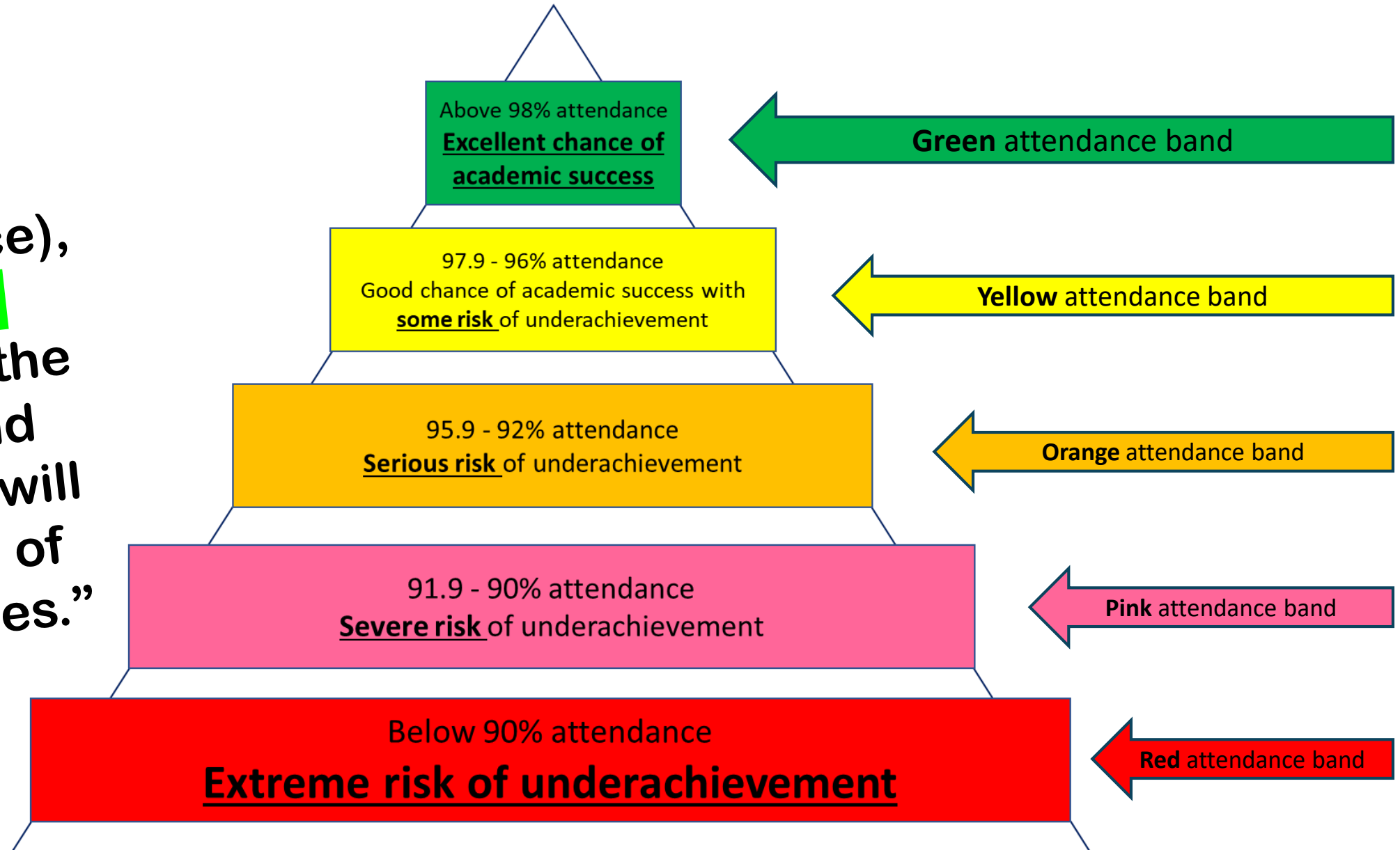
“Turn up (*attendance*), **work hard** (*AtL*) *and the grades and progress will take care of themselves.”*

- National data and our own data shows this.



Sale High School Attendance and Progress Bands – Risks to Achievement Pyramid

**“Turn up
(attendance),
work hard
(AtL) and the
grades and
progress will
take care of
themselves.”**



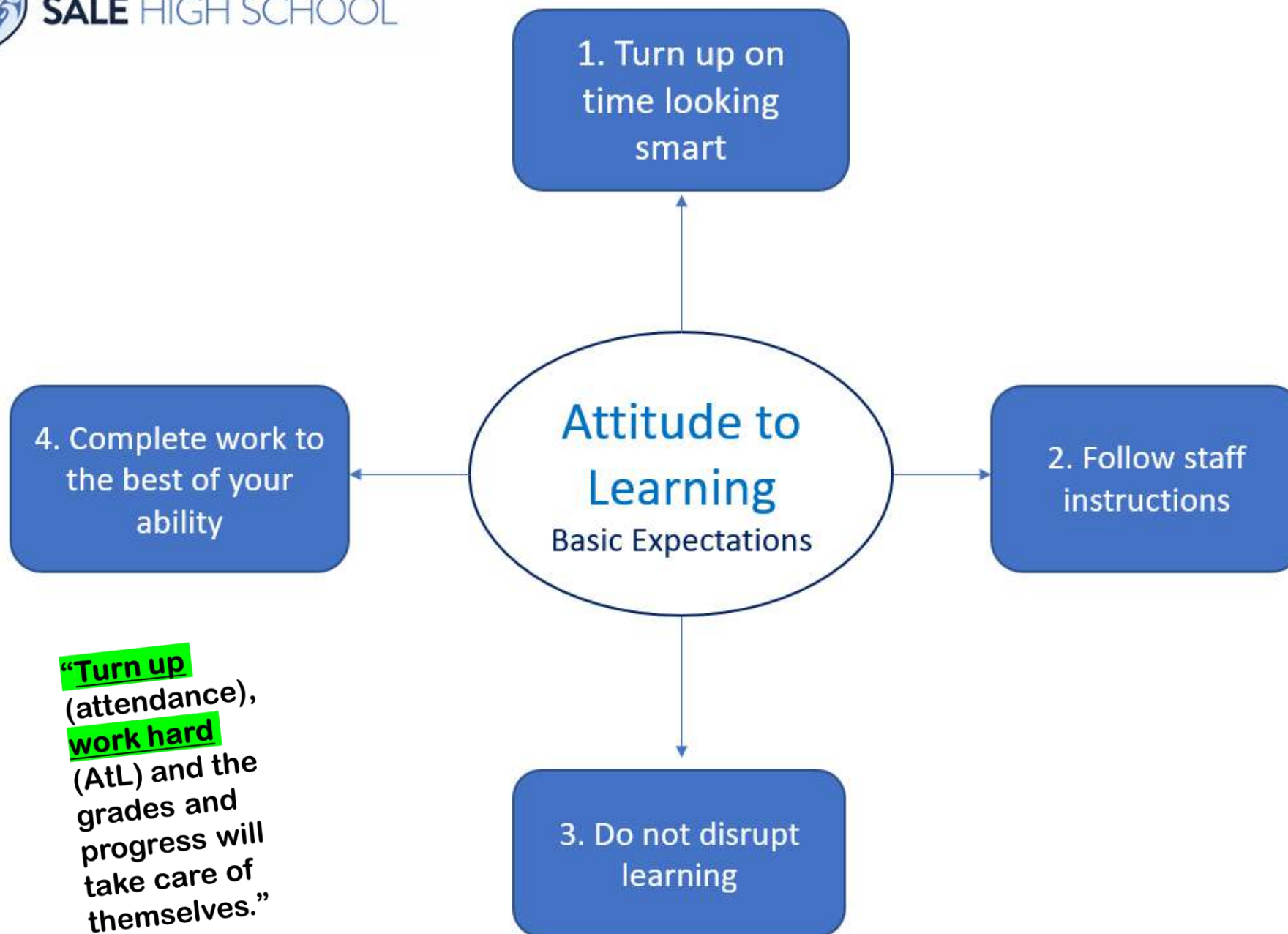
Attendance

Sale High School's whole school attendance target is +95%.



%	Impact on outcomes	Days of per month	Days of per year	Days off over 5 years
98%	No significant impact	0.5	4	19
95%	Minimal impact	1	10	48
90% (PA)	Negative Impact	2	19	95
85%	Significant negative impact on outcomes	3	29	143
80%	Extreme negative impact on outcomes	4 (day off per week)	38	190 (full year off school)

When	Rewards
Weekly	<ul style="list-style-type: none"> Form group from each year with the highest attendance that week with a class bag of drumstick lollies. Every child with 100% attendance for that week get 10 bonus Achievement Points. Achievement Points can be exchanged for rewards.
Half termly	<p><u>100 Club</u></p> <p>All students with 100% attendance for that half term go into a raffle for <u>£10</u> Amazon voucher. One voucher per year group.</p>
Termly	<p><u>100 Club</u></p> <p>All students with 100% attendance for that term go into a raffle for <u>£20</u> Amazon voucher. One voucher per year group.</p>
Yearly	<p><u>100 Club</u></p> <p>All students with 100% attendance for the year go into a raffle for <u>£30</u> Amazon voucher. One voucher per year group.</p>



“Turn up
(attendance),
work hard
(AtL) and the
grades and
progress will
take care of
themselves.”



SCHOOL VALUES

Attitudes

Aspiration

Think big, always have a growth mindset.

Resilience

Work hard, find solutions, never give up.

Achievement

Fulfil your potential, be prepared for what's next.

Behaviours

Respect

Be kind, consider others at all times.

Diversity

Celebrate difference, value everyone.

Community

Make a positive difference, be proud to belong.

SHS LEARNING EXPECTATIONS

LE 1

Turn up **on time**, looking **smart**

COMMUNITY

LE 2

Follow teachers' instructions

RESPECT

LE 3

Do not disrupt learning

RESPECT & ACHIEVEMENT

LE 4

Complete work to the **best** of **your** ability

ACHIEVEMENT, ASPIRATION & RESILIENCE

LE 5

Take accountability

(Take full responsibility for your actions & learning)

RESPECT & RESILIENCE

Student **choices** and **consequences**

C1

- First warning
- **Make the correct choice**

C2

- **You have continued to make poor choices**
- **Removal to RESET = after school detention**



Large signage is up in every classroom.

They are they as **constant and visible** reminders of the values and learning expectations of a **'Sale student'**.

Values Cards

The System for Students

- An opportunity to be acknowledged and rewarded on a regular basis for meeting ethos and cultural expectations.
- Values Cards completed positively will result in rewards.
- Values Cards completed negatively will result in C3 detention.

When	Prize
Weekly	Positive cards drawn every Friday. One from each year group. Winner receives a prize.
Autumn 1.1	Draw for £10 Amazon voucher for zero negative cards completed. One for each year group.
1.2	Draw for £10 Amazon voucher for zero negative cards completed. One for each year group.
Spring 2.1	Draw for £15 Amazon voucher for zero negative cards completed. One for each year group.
2.2	Draw for £15 Amazon voucher for zero negative cards completed. One for each year group.
Summer 3.1	Draw for £20 Amazon voucher for zero negative cards completed. One for each year group.
3.2	Draw for £30 Amazon voucher for zero negative cards completed. One for each year group.



SALE HIGH SCHOOL

Ethos & Culture

VALUES CARD

Student name: _____

Form: _____

Form Tutor: _____

Issue Date: _____

SHS VALUES

Aspiration

Resilience


Achievement

Respect

Diversity

Community

*lost cards will result in an automatic C3 detention



SALE HIGH SCHOOL

Positive – Respect, Diversity, Community

Negatives – Not demonstrating SHS Values

Positives	Staff Initials & Date		Negatives	Staff Initials & Date	

Mobile Phone Policy from September 2025

NEVER SEEN NEVER HEARD:

Mobile phones seen in pockets will be confiscated. Phone should be switched off in bags.

Mobile phones are not allowed for checking the time. Student are allowed to wear a watch.

Mobile phone are not allowed for checking timetables. Students should be organised and have a printed timetable.

Mobile phones are not allowed for communication with parents and carers. Student needing to communicate with home should go to student services.

Parents/carers must not call or message their child's mobile phone during the school day. Phones should be switched off in bags. Parents/carers should ring the main school office in a an emergency or if they need to communicate with their child during the school day.

Mobile phones are not allowed to be used at the end of the school day. We are a 'never seen never heard' mobile phone site.

NEVER SEEN NEVER HEARD:

1. Mobile phones seen in pockets will be confiscated. Phone should be switched off in bags.
2. Mobile phones are not allowed for checking the time. Student are allowed to wear a watch.
3. Mobile phone are not allowed for checking timetables. Students should be organised and have a printed timetable.
4. Mobile phones are not allowed for communication with parents and carers. Student needing to communicate with home should go to student services.
5. Parents/carers must not call or message their child's mobile phone during the school day. Phones should be switched off in bags. Parents/carers should ring the main school office in a an emergency or if they need to communicate with their child during the school day.
6. Mobile phones are not allowed to be used at the end of the school day. We are a 'never seen never heard' mobile phone site.



Mobile phones are a leading cause of suspensions and permanent exclusions in Trafford and nationally.

Number of recorded mobile phone confiscations:	Actions and consequences:
First offence	<ul style="list-style-type: none"> • Mobile phone will be confiscated and held till the end of the school day. • C3 30min after school detention
Second offence	<ul style="list-style-type: none"> • Mobile phone will be confiscated and held for until the end of the school day. • A parent or carer must collect the phone and will be issued with a copy of the mobile phone policy. • C3 60min after school detention
Third offence	<ul style="list-style-type: none"> • Mobile phone will be confiscated and held for 48 hours. If this is a Friday it will be returned on the Monday. • The mobile phone needs to be collected by a parent once the 48 hours has <u>past</u> before 4pm on the given school day as student services closes at 4pm. • No exceptions will be made to this in order to create a safe culture of 'mobile phones never seen never heard'. • C3 60min after school detention • Students will be banned from bring a mobile phone to school. Once a ban is issued, parents/carers concerned about safety will be advised to buy a low-cost mobile phone and a pay as you go SIM card for the duration of any ban.
Continued offence	<ul style="list-style-type: none"> • Mobile phone will be confiscated and held for one week. • The mobile phone needs to be collected by a parent or carer before 4pm on any given school day as student services closes at 4pm. • C3 60min after school detention • Parent/carers meeting to discuss an outcome regarding repeated misuse of mobile phones/technology.



Students must store their devices in their school bag – they should not be in a pocket of their blazer. Electronic devices are the responsibility of the student, not the school and the school will not be held financially responsible for any loss of mobile phone/personal items.



Equipment Expectations (being ready to learn)

All students **must bring a school bag** and...

- Pen (preferably two), ruler, pencil, rubber

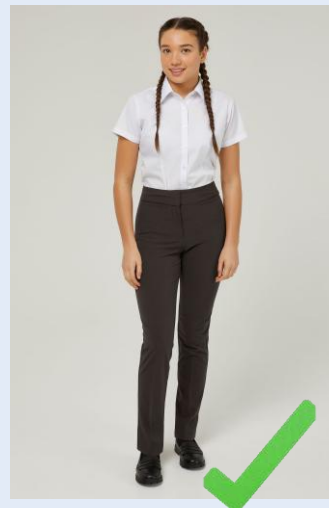
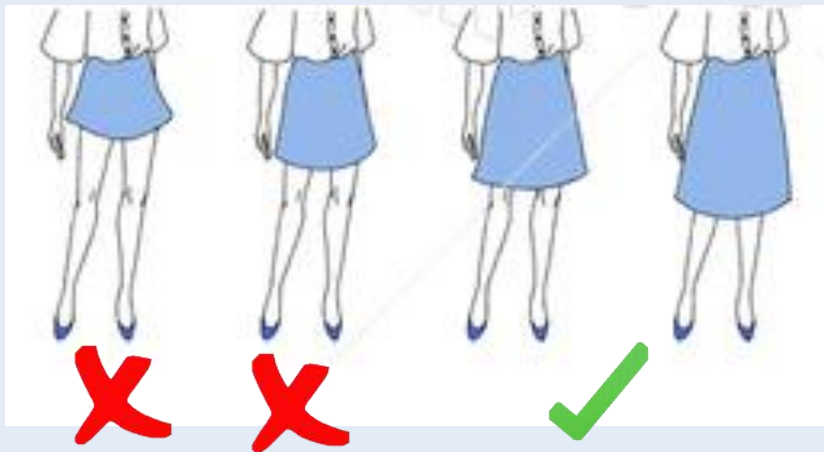
Bringing equipment to school shows an excellent **attitude to learning.**

Skirts and Trousers



Trousers and Skirts:

Students who prefer, must wear full-length tailored trousers (tailored shorts are allowed in the summer). **Skinny jeans, joggers, leggings, and other non-uniform pants are not permitted.** Students who wish to wear skirts should choose those that are at or just above the knee and **must not** roll them up. Skirts must not be altered to reduce length. Skirts must be worn as intended, or students will be asked to wear trousers. Acceptable legwear includes black or navy tights or plain ankle socks or below the knee socks (*no logos/ribbons/diamonds*). **Over-the-knee socks are not allowed.** Sport socks/fashion socks can not be worn over tights.





A Culture of High Expectations – Jewellery (and accessories)

One stud in each ear lobe is allowed. Nothing else including accessories.



Most secondary schools in Trafford have a no jewellery policy



All black leather trainers guidance

Must be/have:

- All black leather
- Black laces
- Plain all black sole



Must not be/have:

- Stand out logos/designs (for example white writing against black leather)
- Reflectors
- Air bubbles
- Canvas materials in any area
- Egregious soul design

Egregious soul design



Small silver logo



Air bubbles



Canvas



Air bubbles and canvas



Suede canvas



White line



Student not in the correct footwear will be directed to wear pumps and will need to sit a detention.

Time out passes



Time out cards that aren't used appropriately can impact learning and will only be issued where really needed.

Time out passes will be reviewed half termly.

Some students use their leave early pass and then wait outside another classroom for their friends.

Lost learning	Over a day	Over a week	Over a year	Over 5 years
Lost learning means lower outcomes	<ul style="list-style-type: none">5 minutes a lesson = 25mins lost learning	<ul style="list-style-type: none">Two hours lost learning	<ul style="list-style-type: none">78 hours of lost learning.Over 3 teaching weeks	<ul style="list-style-type: none">390 hours15 weeks of lost learningOver a full term of lost learning

Student Handbook



CONTENTS PAGE



- 01 SALE HIGH SCHOOL VALUES
- 02 CALENDER AND KEY DATES
- 03 STUDENT INFORMATION AND TIMETABLE
- 04 SAFEGUARDING
- 05 LEARNING EXPECTATIONS
- 06 ATTITUDE TO LEARNING SCORES
- 07 FORM TIME PROGRAMME
- 08 MOBILE PHONE POLICY
- 09 UNIFORM POLICY
- 10 BEHAVIOUR, CULTURE AND ETHOS POLICY
- 11 VALUES CARD
- 12 REWARDS
- 13 ATTENDANCE INITIATIVE AND REWARDS

SCHOOL VALUES

School Values

Attitudes	Aspiration <i>Think big, always have a growth mindset.</i>
	Resilience <i>Work hard, find solutions, never give up.</i>
	Achievement <i>Fulfil your potential, be prepared for what's next.</i>
Behaviours	Respect <i>Be kind, be polite, consider others at all times.</i>
	Diversity <i>Celebrate difference, value everyone.</i>
	Community <i>Make a positive difference, be proud to belong.</i>

ATTITUDINAL VALUES

ASPIRATION

Students should set high goals for themselves and always strive to improve, both academically and personally. They should take pride in their learning and seek opportunities to challenge themselves.

RESILIENCE

Students should embrace challenges with a positive mindset and learn from their mistakes rather than giving up. They should stay determined even when things get tough and support others in overcoming difficulties.

ACHIEVEMENT

Students should work hard and stay focused on their goals, making the most of their education. They should celebrate their successes and help others to reach their full potential.

BEHAVIOURAL VALUES

RESPECT

students should treat teachers, classmates, and school staff with kindness and consideration at all times. They should listen to others' opinions and value different perspectives, even when they disagree.

DIVERSITY

students should appreciate and respect the differences in others, whether in culture, background, or beliefs. They should create an inclusive environment where everyone feels valued and accepted.

COMMUNITY

students should contribute positively to the school community by being helpful, responsible, and supportive of others. They should take care of shared spaces and work together to make the school a welcoming place for all.



Week beginning 1st September

Week A

Attendance	Behaviour Points	Achievement Points

Record your attendance and behaviour data here

Topic:

Argument for YES/AGREE

Argument for NO/DISAGREE

One minute speech:

Notes:

Form Time Programme



Year	Mon	Tues	Wed	Thurs	Fri
7	Sale Awards Personal Development	PSHE	Reading	Reading	Assembly
8	Sale Awards Personal Development	PSHE	Reading	Assembly	Reading
9	Sale Awards Personal Development	PSHE	Assembly	Reading	Reading
10	Sale Awards Personal Development	Assembly	PSHE	Reading	Reading
11	Assembly	Directed Studies			



Clubs and Societies

[illegible]

Extra Curricular



P.E. Extra-Curricular Timetable



Day and Time	MONDAY	TUESDAY	WEDNESDAY	THURSDAY	FRIDAY
Breaktime	Football	Basketball	Football	Basketball	Football
LUNCHTIME WEEK A	KS3 Girls Football Miss Davies	KS4 Basketball Club Mr Jackson	Y8 + 9 Basketball club Mr McCallum	Y7 Basketball Club Mr Kelly	KS4 Netball / Volleyball Club Miss Thomas
LUNCHTIME WEEK B	KS3 Girls Football Miss Thomas	Year 9 + KS4 Badminton Club Mr Jackson	KS4 Netball Club Miss Davies	Y8 Badminton Club Mr Kelly	Y7 Badminton Club Mr McCallum
AFTER SCHOOL	Staff Meetings	Year 8 Football Mr McCallum Year 9 Football Mr Jackson Year 10 Football Mr Gould Year 7 Netball Miss Davies	Year 8 + 9 Netball Miss Thomas Year 7 Football Mr Kelly	Year 11 Fixtures Mr Kelly KS3 Rugby Mr McCallum Fixtures	Fixtures



SPORTS HALL: Clubs start at year groups allocated time slot and only that year group will be allowed in with **20 pupils maximum** on a **first come first entry** basis. Doors will be locked 10 minutes into the start of the session or when the first 20 pupils arrive. There will be no entry after this time.